

# Caracterização das dinâmicas físico-químicas e da fertilidade de solos de mangal da Guiné-Bissau em diferentes condições agroecológicas subjacentes ao cultivo do arroz

## *Characterisation of physical-chemical and fertility dynamics of mangrove soils from Guinea-Bissau in different agroecological conditions underlying paddy rice cultivation*

**Matilda Merkohasanaj<sup>1,3\*</sup>, Nuno Cortez<sup>1,2</sup>, Luís F. Goulão<sup>3</sup>, Anna Andreetta<sup>4</sup>**

<sup>1</sup> " [Centro de Estudos Florestais \(CEF\), Instituto Superior de Agronomia \(ISA\), Tapada da Ajuda, 1349-017 Lisboa, Portugal /](#)

[\\*mmerkoh@uma.es](mailto:mmerkoh@uma.es); [mmerkohasanaj@ulisboa.pt](mailto:mmerkohasanaj@ulisboa.pt)

<sup>2</sup> Departamento de Recursos Naturais, Ambiente e Território, Instituto Superior de Agronomia (ISA), Tapada da Ajuda, 1349-017 Lisboa, Portugal

<sup>3</sup> Linking Landscape, Environment, Agriculture and Food (LEAF) Research Centre, Instituto Superior de Agronomia (ISA), Tapada da Ajuda, 1349-017 Lisboa, Portugal

<sup>4</sup> Department of Earth Sciences, University of Florence, Piazzale delle Cascine 15, 50144 Firenze, Italy

### Resumo

A produção de arroz de mangal é de vital importância na maioria dos países da África Ocidental, incluindo a Guiné-Bissau. Mesmo em áreas de reduzida dimensão, existem diferentes condições agroecológicas subjacentes ao cultivo de arroz, e são principalmente atribuídas à precipitação e temperatura que afetam a acidez do solo, salinidade e disponibilidade de nutrientes. O objetivo principal deste estudo foi conhecer as dinâmicas nas propriedades físicas, químicas e nutricionais dos solos de mangal, considerando a sua variabilidade e distribuição, a fim de evidenciar melhores práticas de gestão. Com base na monitorização de campo e em três campanhas de amostragem de solo antes e durante o ciclo de produção do arroz, em duas regiões costeiras distintas da Guiné-Bissau (Oio e Tombali), foi feita a caracterização das principais condições agroecológicas dos solos. Nos mangais influenciados pelas marés, Mangais de Maré (TM) os resultados mostraram que as condições de salinidade e acidez foram reduzidas a níveis não tóxicos nos momentos de início do viveiro ou do transplante. No entanto, as observações dos resultados mostraram que em campos de TM que possuem drenagem limitada, a intrusão de água salgada pode criar um risco iminente com concentração salina levando a condutividade eléctrica a valores de aproximadamente  $6 \text{ mS cm}^{-1}$  causando até perdas importantes de produção. Nos Mangais Associados (AM), os níveis de acidez e salinidade não põem um problema, mas níveis muito baixos de principais macronutrientes (até 2 vezes menores que TM), limitam a produção. Além disso, os resultados mostraram alta variabilidade nas propriedades físico-químicas dos solos das principais condições agroecológicas identificadas e um gradiente positivo a jusante na fertilidade do solo.

Palavras-chave: solos de mangais, produção de arroz, disponibilidade de nutrientes, acidez, salinidade.

### Abstract

Mangrove swamp rice production is of vital importance in most West African countries including Guinea Bissau. Even in a small country, different agroecological conditions underlying rice cultivation exist, and are mostly attributed to precipitation and temperature which impact soil acidity, salinity, and nutrient availability. The purpose of this study was to understand the physical, chemical, and nutritional properties of mangrove soils considering their variability and distribution in order to highlight the most adequate management practices. Based on field monitoring and three soil sampling dates, before and during the rice production cycle, in two different coastal regions of Guinea Bissau (Oio and Tombali), the most representative soil agroecological conditions were characterised. In the Tidal Mangrove (TM) swamps, the results showed that salinity and acidity concentrations were reduced to non-toxic levels at the nursery or transplantation moments. However, results from field observation showed that in those TM fields with limited drainage, the saltwater intrusion may create an imminent threat, with higher salt concentration corresponding to an electrical conductivity of approximately  $6 \text{ mS cm}^{-1}$  risking total production losses. In the Associated Mangrove (AM) swamps, acid and salinity levels do not pose a problem, but very low macronutrient levels (up to 2 times lower than TM), limite productivity in these soil. Furthermore, results showed high variability in physical chemical properties in the soils from the main agroecological conditions identified and a positive down-stream gradient in soil fertility.

Keywords: mangrove paddy soils, rice production, nutrients availability, acidity, salinity.

**Abbreviations:** EC - electric conductivity, GB - Guinea Bissau, TM - Tidal Mangrove, AM - Associated Mangrove, AT - Associated Terrace, (N-P-K) - nitrogen, phosphorus and potassium

## 1. Introduction

Mangrove swamp rice cultivation is one of the most productive systems globally, but highly dependent on regular and abundant rainfall, unpredictable tidal height and intensive labour force; thus, it is a system greatly affected by climate change and significant socio-economic transformations (Temudo & Santos, 2017).

Within the framework of the Malmon project “Mangroves, mangrove rice and mangrove people - sustainably improving rice production, ecosystems and livelihoods”, funded by the European Union (DeSIRA/FOOD/2019/412-700), this work ultimately aims at contributing to increasing the productivity and stabilising the inter-annual mangrove swamp rice production in Guinea-Bissau.

Sustainable alternatives, such as rice intercropping systems are not yet considered in these agroecological systems, due to the particular swamp conditions of the soils. To meet the plant's nutrient needs, the provision in N-P-K by fertilizer input is economically unsustainable for the farmers' but also risks the environmental sustainability of these very sensitive agroecological systems. The use of organic fertilizers can be environmentally sustainable and can lead to significant increases in organic matter levels and plant-available N-P-K in the soil, busting production (Moe et al., 2019).

## 2. Material and Methods

### 2.1. Research Area Characterisation

This study uses a multi-site approach, located in 5 villages from two different coastal regions (Oio and Tombali) in Guinea Bissau. Oio is located between the basins of the two big rivers Mansoa and Geba. Tombali is located between Cumbija and Cacine river basins. Having a tropical humid climate, the average annual rainfall ranges from 1.500 mm in the north to 2.000 mm in the south. Figure 1 presents the total and average precipitation for three main villages in the study area during the 2021 hydrological season. Temperature projection scenarios systematically signal

an increased average up to + 1.4°C and modelled precipitation suggests a reduction up to 10% for period 2016-2045 (UN Convention on Biological Diversity, 2019).

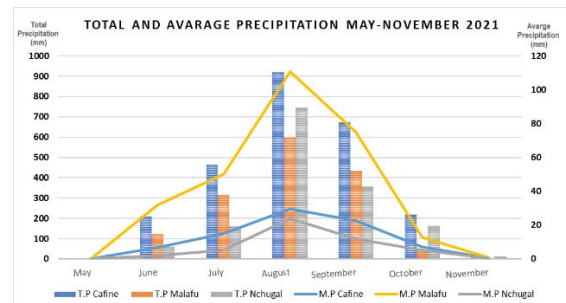


Fig.1 – Monthly total and average precipitation for Cafiue (Tombali region), Nchugal and Malfu (Oio region); (T.P- Total Precipitation, M.P- Mean/Average Precipitation).

According to the topography, Guinea Bissau is predominantly flat, with average altitude that does not exceed 40 m above sea level. The main types of soils are hydromorphic, divided into marine and continental hydromorphic soils (known as the tropical paddy soils used for the rice cultivation) and the highland soils or ferralitics and tropical ferruginous soils (suitable for annual crops) (Teixeira, 1962). According to the Soil Taxonomy, they are classified mainly as Oxisols, Ultisols and Inceptisols (Van Gent & Ukkerman, 1993).

### 2.2. Research Design and sample collection

A schematic cross section of the catena (Fig. 2a) shows four predominant agro-ecologies in both regions: a residual terrace (village), the intermediate terrace (mainly where the animals pasture), the rice field terrace area, and the mangrove terrace. The rice field terrace is sub-divided into three main agroecological conditions (Fig. 2b), as follows: AT – Associated Terrace; AM – Associated Mangrove; TM – Tidal Mangrove.

The design methodology for this study focused mainly on the **TM** and **AM** systems (respectively 20% and 80% of the total area), as the **AT** fields occupy just 10% of the total rice fields. Soil samples in the 20 cm of topsoil were taken in three key moments of the rice production cycle: T1 (dry season – 4 months before the planting), T2 (wet season – during the land

preparation, plantation) and T3 (in the moment of rice flowering and grain formation). General soil parameters including pH, EC, C and N content, C/N ratio, P, K and CEC were analyzed for about 141 topsoil samples.

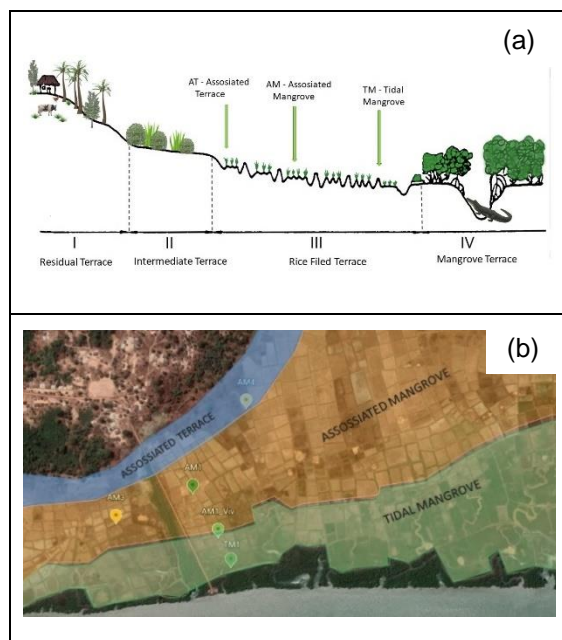


Fig. 2 – (a) Cross-section representation of the catena main agroecological conditions; (b) Overview of soil rice field distribution in the Oio and Tombali regions. Pins mark the location of the study trials (Source: (a) Ajusted from Van Gent & Ukkerman, 1993).

### 3. Results and Discussion

During the 2021 campaign, the observed rice production cycle indicated different schedules/timing for the beginning of the nursery preparation and consequently the transplanting, flowering and grain formation, according to each region. This is due to the dependence on the beginning of the rains and the consequent accumulated precipitation, influencing the entire growth cycle and soil nutritional levels, which clearly depend on the circulation of natural inputs for these ecological conditions.

For the Oio region (Table 1), the TM soils during the dry season showed a slightly topsoil acidity and a trend to neutralize during the production cycle (T2, T3). Conversely, topsoil showed high CEC and salinity values (mainly caused by  $\text{Na}^+$  high concentrations) during the dry period, the latter gradually decreases during the

production cycle. Quantification of key macronutrients level, N-P-K, disclosed higher concentrations during T1, before leaching and, therefore, decreasing slightly during T2 and T3. Generally, our results confirm that these soils have high clay content (60-80%), being classified as clay or silty clay, and having a bulk density of 1.0 to 1.3  $\text{g/cm}^3$ , which is ideal for plant growth.

Regarding AM rice field, the quantified salinity was not high at T1, although low pH values were observed, and the soils showed to remain slightly acid in T2 and T3 (pH  $\approx$  6.1). The measured N-P-K levels significantly differed from T1 to T2, T3. This observation may be related to nutrient leaching during the flooding period. In this group, soils showed to be mainly silty loamy to silty clay, with bulk density of 1.4 to 1.6  $\text{g/cm}^3$ , almost reaching the limit of growth restrictions.

Farmers of Oio make nurseries near their homes, where the topsoil is highly influenced by ferruginous limestone, dominated by coarse textures, and classified in its majority as sandy loam or loamy sand soils. These soils are generally lacking in nutrients and have high restrictions due to high bulk density ( $> 1.8 \text{ g/cm}^3$ ). Levels of N-P-K are at low critical limits where the only income of organic matter is the scarce shrub and grass vegetation and few cattle manure during their grassing. It was observed pure seedlings quality in nurseries, and high effects of leaf bronzing caused by nutrient deficiency and high iron concentrations.

In the Tombali region, the TM topsoil did not present signs of acidification (pH  $\approx$  6.5), while salinity levels, even being extremely high during the dry season (EC = 11.54  $\text{mS cm}^{-1}$  at T1), drop to acceptable levels for normal plant growth due to sufficient precipitation and drainage. Likewise, the N-P-K availability tends to decrease from T1 to T2 and T3, probably due to nutrient leaching. Similarly to the Oio region, the clay or silty clay TM soils have optimal bulk densities for rice growth.

The AM soils, in this region, showed acidification during T1, remaining slightly acid during T2 and T3. Salinity in these fields has fallen to much lower values (EC

T<sub>1</sub>, T<sub>2</sub> = 0,58 mS cm<sup>-1</sup>), while nutrient availability, namely P and K was quantified as twice lower when compared to TM, except of N and C, that showed similar levels of those observed in TM.

Table 1 – Results of soil analysis for Oio and Tombali region. Values correspond to average for pH, EC, N%, C/N, P, K and CEC, calculated from 141 soil samples taken in T1 - dry season, T2 - planting/nursery, T3 - flowering/grain formation. TM - 58; AM - 64; Viv.1 – 19, nursery in the Residual Terrace.

	pH (H <sub>2</sub> O)	EC mS/cm	N %	C %	C/N	P µg/g <sup>-1</sup>	K µg/g <sup>-1</sup>
<b>OIO</b>							
TM(T1)	6.22	3.37	0.95	1.10	11.6	56.9	826.4
TM(T2)	6.83	2.48	0.14	1.16	8.3	39.5	872.0
TM(T3)	6.82	1.10	0.14	1.32	9.6	36.8	628.0
AM(T1)	3.85	1.79	0.81	1.31	16.2	16.8	660.9
AM(T2)	6.09	0.67	0.15	1.47	10.0	0.9	398.8
AM(T3)	6.19	0.53	0.15	1.61	10.7	22.2	332.8
Viv.(T1)	4.99	0.06	0.70	0.80	11.6	1.8	57.2
Viv.(T2)	6.68	0.44	0.11	1.34	11.5	5.8	105.5
<b>TOMBALI</b>							
TM(T1)	6.24	11.5	1.04	1.58	15.2	57.6	1231.8
TM(T2)	6.79	1.43	0.16	1.44	9.2	55.9	747.3
TM(T3)	6.72	0.98	0.14	1.37	10.0	50.3	677.5
AM(T1)	4.77	2.59	1.13	1.54	13.6	5.7	677.5
AM(T2)	6.08	0.57	0.13	1.43	10.6	17.6	332.6
AM(T3)	6.01	0.59	0.15	1.56	10.2	18.3	306.7

After a comparison between TM of both regions, it clearly stands out that TM in Tombali has a better fertility status especially in P concentrations and organic matter (% of total C). Despite some salinity problems, even the TM soil at Tombali, although being more saline during T1 (reasonably explained by higher tides in this area), has these problems mitigated throughout the growing season by precipitation and salt leaching.

The same can be confirmed for the comparison of the AM. In Tombali these agroecological systems present a slightly better fertility status.

#### 4. Conclusions

Collectively, our results suggest that: (a) There is an eminent need to improve soil conditions in the nurseries, as it is of key

importance to have quality seedling for transplantations influencing consequently throughout the growth stages and therefore yield performance (applying organic fertilisers may contribute to a solution); (b) During the dry season, farmers can allow the saline water to enter so they can work the soil. This procedure can improve/enrich the soil by flowing water with suspended matter and killing certain weeds, but this should not be longer than 2 months before the planting, so the accumulated salinity can be washed away by the first rains. As observed in the case of TM trials in Oio, EC of approximately 6 mS cm<sup>-1</sup> shows to cause total production losses. Other works also refer equivalent yield loss during the growing cycle under EC conditions of 3.5 mS cm<sup>-1</sup>, reaching even to 50% of yield loss at EC levels of 9.5 mS cm<sup>-1</sup> (Asch, et al. 1999); (c) Inorganic fertilization is not an option for the small farmers, as the sustaining incomes from their production is extremely limited. However, proper management of the water use, as well as weed and straw incorporation can increase organic matter, consequently leading to increased nutrient availability and improved soil conditions.

#### References

- Asch, F., Dingkuhn, M., Wittstock, C., & Doerffling, K. (1999). Sodium and potassium uptake of rice panicles as affected by salinity and season in relation to yield and yield components. *Plant and Soil*, 207(2), 133–145. <https://doi.org/10.1023/A:1026407913216>
- Moe, K., Htwe, A. Z., Thu, T. T. P., Kajihara, Y., & Yamakawa, T. (2019). Effects on NPK status, growth, dry matter and yield of rice (*Oryza sativa*) by organic fertilizers applied in field condition. *Agriculture (Switzerland)*, 9(5). <https://doi.org/10.3390/agriculture9050109>
- Teixeira, A. J. da Silva (1962). *Os solos da Guiné Portuguesa. Carta Geral, Características, Formação e Utilização*. Junta de Investigações do Ultramar, Estudos, Ensaios e Documentos, nº 100, Lisboa.
- Temudo, M. P., & Santos, P. (2017). Shifting environments in Eastern Guinea-Bissau, West Africa: The length of fallows in question. *NJAS - Wageningen Journal of Life Sciences*, 80, 57–64. <https://doi.org/10.1016/j.njas.2016.12.001>
- UN Convention on Biological Diversity. (2019). *Guinea Bissau First Biennial Update Report to the United Nations Framework Convention on Climate Change*.
- Van Gent P., & Ukkerman, R. (1993). *The Balanta rice farming system in Guinea-Bissau*. 1250 mm, 103–122. In D.L. dent and M.E.F. van Mensvoort (eds). Selected paper of Ho Chi Minh City symposium on acid sulfate soils. ILRI Pub.53. International Institute for Land Reclamation and Improvement, Wageningen, the Netherlands.



## 5. Annex I

### Graphs and Figures

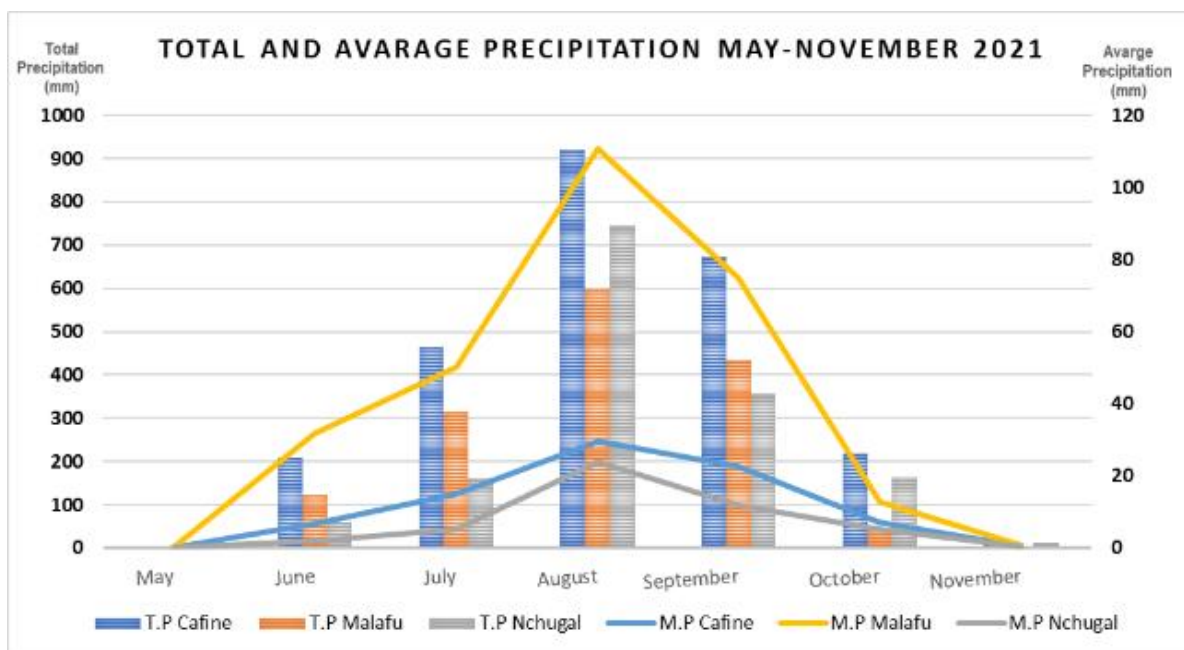


Fig.1 – Monthly total and average precipitation for Cafine (Tombali region), Nchugal and Malfu (Oio region); (T.P- Total Precipitation, M.P- Mean/Average Precipitation).

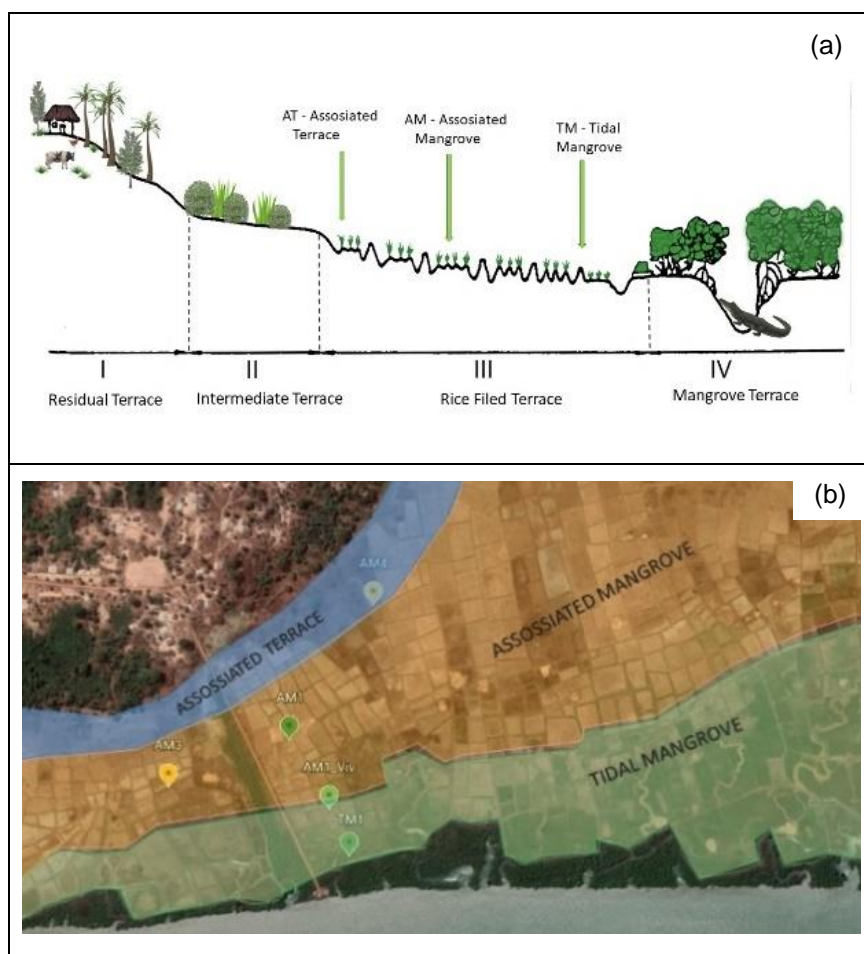


Fig. 2 – (a) Cross-section representation of the catena main agroecological conditions; (b) Overview of soil rice field distribution in the Oio and Tombali regions. Pins mark the location of the study trials (Source: (a) Adjusted from Van Gent & Ukkerman, 1993).